

Dimensions

Lamps:

80x100x80 mm

0,5 kg

Control Boards:

240x125x50 mm

0,5 kg



Power

Lamps: < 60 W

Control boards: < 160 W

Voltage range: 23-30 V

The system power consumption depends on driving speed and supply voltage.

Lamps are supplied with power from Control Boards.

Description

LED based pulsed lamp system designed for Greenwood Engineering **Surface Imaging System**.

Upon presence of a trigger signal the lamps provide a peak light pulse which can be synchronized with a camera exposure time.

Pulse intensity and width is adjustable via a software interface and can be set according to pixel width and max driving speeds. A max driving speed is fixed in the electronics to protect LEDs under normal driving conditions.

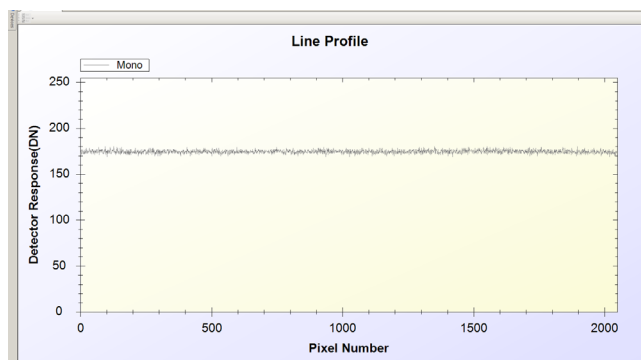
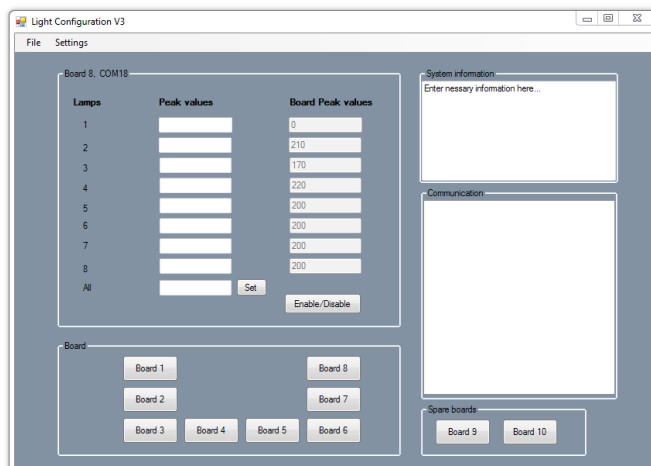
All boards and lamps are equipped with temperature protection circuitry.

Lamps are cooled by airflow when driving. The Control boards are partially cooled from mounting on a heat sink and partially from a forced airflow by two small 80mm



Light Configuration Software

With a simple software interface lamp intensity and pulse width can be adjusted. This allows for a customizable solution where the lamps are configured according to the specific application. A thorough calibration process can be performed by mechanically adjusting the individual lamp to illuminate the area of interest. Further adjustment of the intensity helps achieve the most even light profile possible.



Standard package 4 meter measuring width

- 64 lamps
- 8 Control Boards
- USB Hub PCBs for PC communication interface
- Cooled mounting box for Control Boards
- Mounting units for lamps.
- Lamp configuration software
- Optical filters to suppress sunlight effects.
- 1 year warranty.